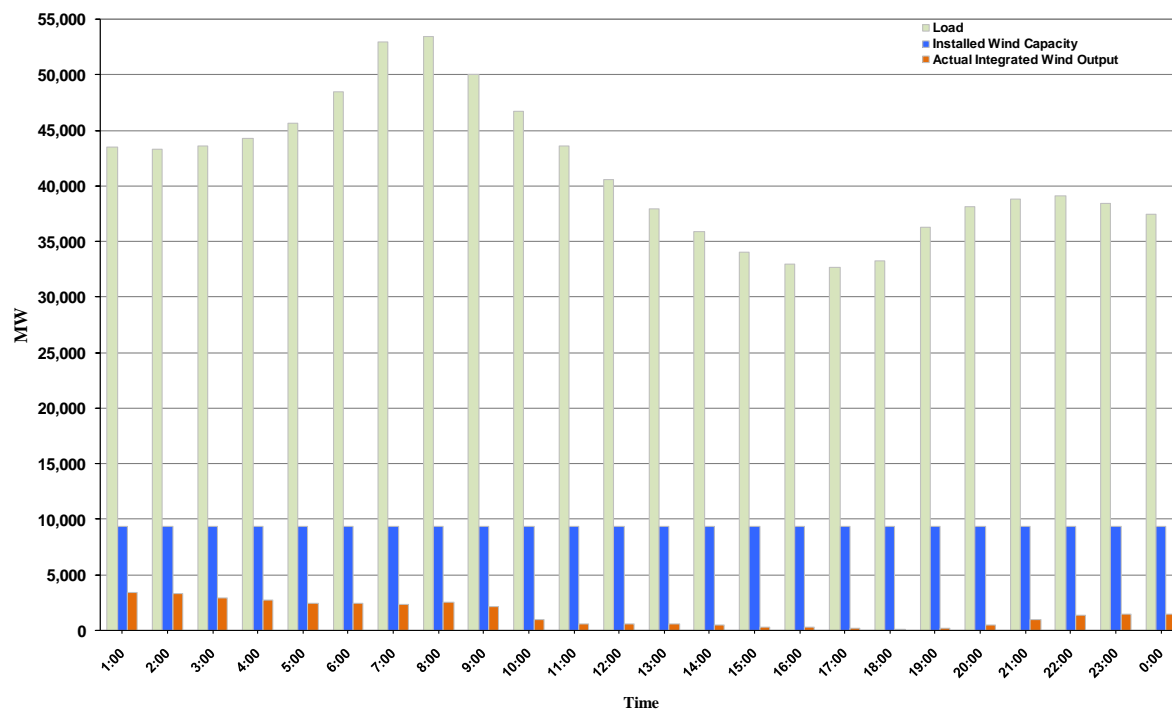




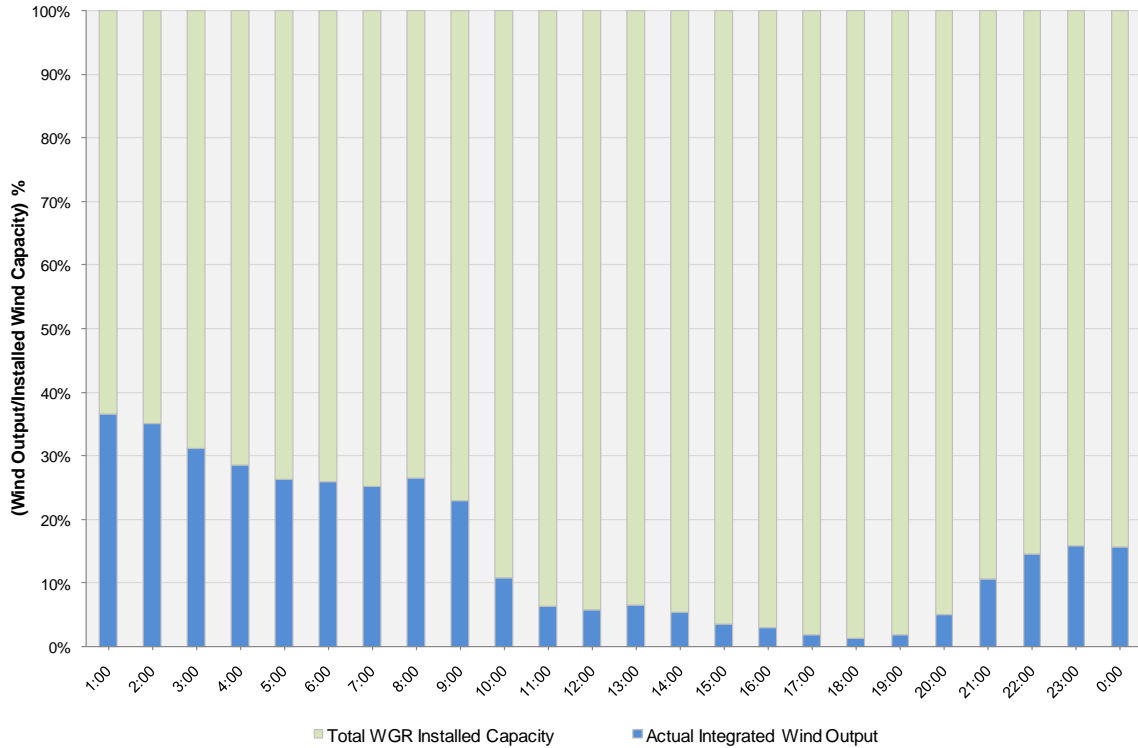
## ERCOT Grid Operations Wind Integration Report: 02/11/11

Peak Load	<b>53,491 MW</b>
Load Peak Hour	<b>08</b>
Wind Record 12/11/10	<b>7,227 MW</b>
Max Wind Value	<b>3,560 MW</b>
Wind Peak Hour	<b>00:07:00</b>
Wind Integration %	<b>8.16</b>

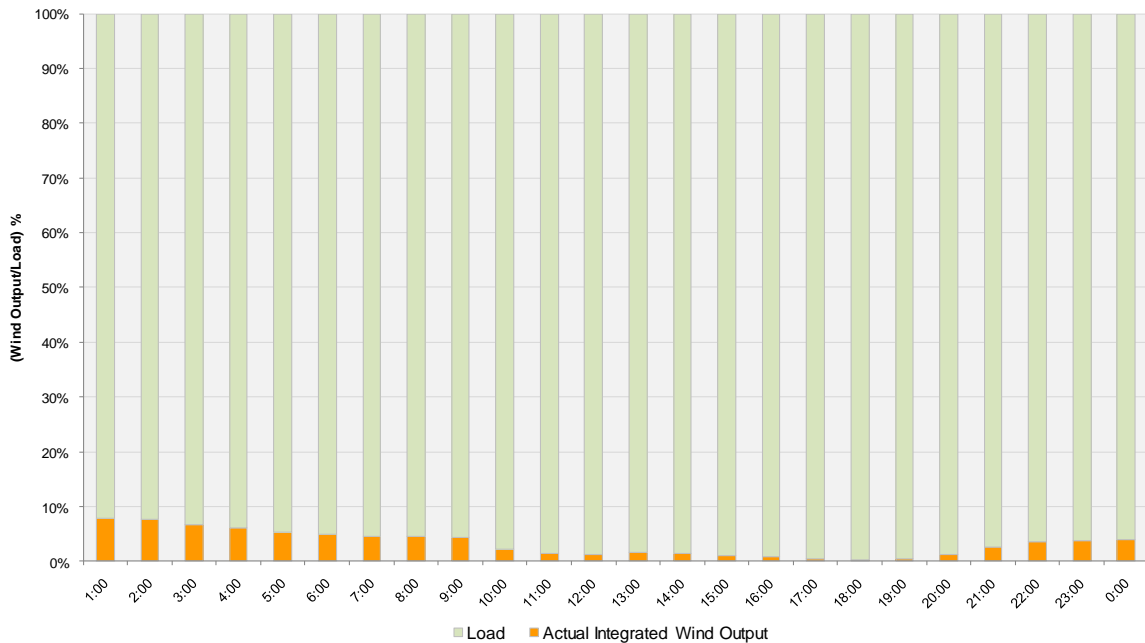
Hourly Average Actual Load vs. Actual Wind Output  
02-11-2011



**Actual Wind Output as a Percentage of the Total Installed Wind Capacity**  
**02-11-2011**



**Actual Wind Output as a Percentage of the ERCOT Load**  
**02-11-2011**



ERCOT Load vs. Actual Wind Output 2/4/2011 - 2/11/2011

